



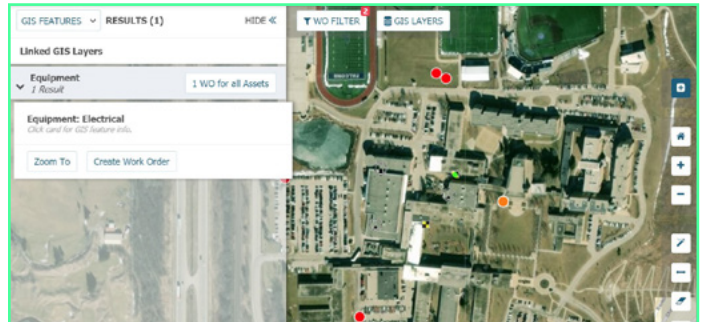
Brightly Asset Essentials

# 7 reasons to begin your Asset Essentials™ journey today

Data and technology have transformed how work is being done — in ways we could not have imagined. This has created new possibilities to work smarter and faster than ever before, to gain unprecedented insight into your operations, and to address infrastructure needs, staffing challenges, shrinking budgets and skilled-trade labor shortages in ways that were simply not possible — until now. Asset Essentials is a next-generation, enterprise work and asset management platform that is designed to put data and technology to work for you to enable smarter and more efficient maintenance and operations — now and for the future. Here are seven reasons for you to begin your move to Asset Essentials today:

## 1. Understand your assets — inside and out

Track, manage and view all of your assets (facilities or “inside the building” and geo-spatial or “outside the building”) in one unified map-based system for centralized data capture, improved collaboration and efficiency, and better service for those your serve.

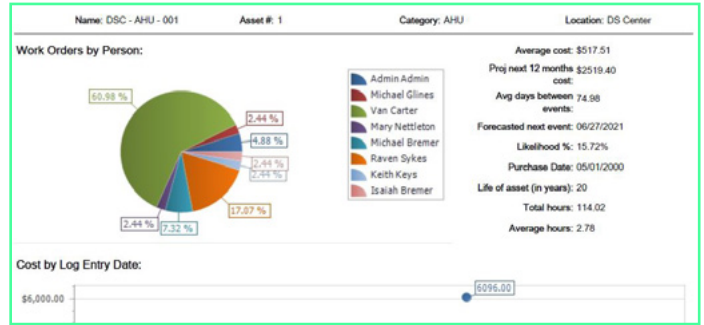


Know where the work is - view all of your work requests and assets on a map.

<b>Use cases</b> What you can do	<b>Benefits</b> Why it matters	<b>Features</b> How we enable it
Plot all of your work and assets on a map  Collect aggregate data on all assets for centralized analysis  Gain a holistic view of your operations	Improved collaboration and efficiency  The ability to identify and resolve issues faster  Better service levels for those you serve	GIS and location mapping  Mobile access to asset information  Trend analysis

## 2. Adopt an asset-centric approach to operations

Take a proactive, asset-centric approach to maintenance by categorizing your assets, leveraging data from meter readings to trigger preventive maintenance activity, reporting on asset-specific trends and building a long-term foundation for predictive, data-driven operations.



Understand the frequency and cost of maintenance for an asset based on historical data.

### Use cases

What you can do

Identify, categorize and prioritize the most critical assets for preventive maintenance

Use data from meter readings to inform and trigger preventive maintenance

Report on the frequency and cost of maintenance for specific assets

### Benefits

Why it matters

More accurate capital planning and budgeting decisions

Extended life cycle of assets

Minimal over- or under-maintenance of assets to drive down cost

### Features

How we enable it

Condition-based monitoring

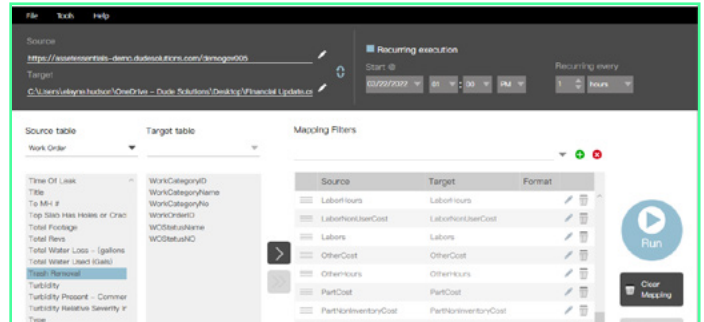
Just-in-time preventive maintenance

Asset lifecycle analysis

Business intelligence

## 3. Use asset information to inform financial planning

Share valuable, insightful work and asset information with financial systems and other business applications for better decision-making and a more complete view of your operations.



Make asset information available for other applications to inform financial and planning decisions.

### Use cases

What you can do

Export data from Asset Essentials and make it available for other applications

### Benefits

Why it matters

More accurate financial planning and budgeting, and a more sustainable capital plan

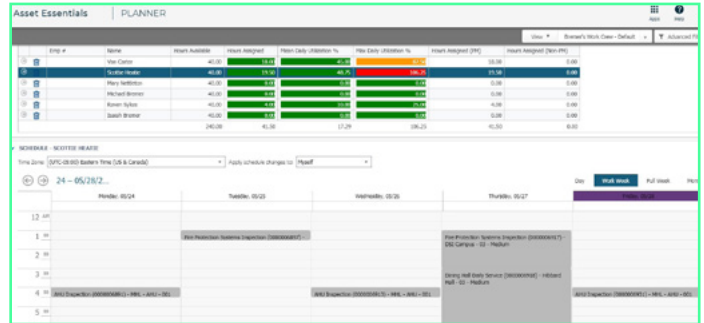
### Features

How we enable it

Data Export (via Connector Tool add-on)

## 4. Work smarter and faster than ever before

Take efficiency to new heights with a next-generation enterprise work and asset management platform designed to help you work smarter and faster than ever before. Assign and complete tasks more efficiently, accomplish even more with less, and manage your staff's time with greater flexibility.



Optimize resource planning and balance team workload with a drag-and-drop calendar view.

### Use cases

What you can do

Assign a work order to more than one person at a time (or to a crew)

Balance team workload with a drag-and-drop calendar view

Change more than one work order at a time

### Benefits

Why it matters

Get work done faster

Take care of your staff

Maximize productivity

### Features

How we enable it

User-configurable dashboards

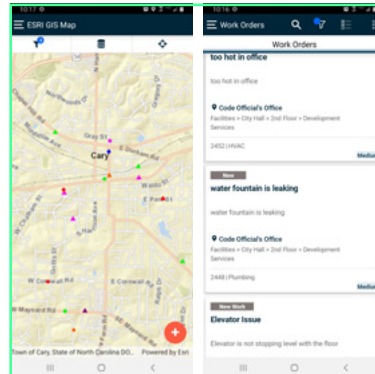
Planner view with drag-and-drop editing

Bulk editing

Savable list view configurations

## 5. Achieve new levels of productivity in the field

Take advantage of a brand new mobile application that allows your technicians to accomplish infinitely more on-the-go, including the ability to capture parts transactions, access reference materials, track work in offline mode and barcode-scan assets.



Use the Asset Essentials mobile app to capture transaction details related to parts, attach documents to work orders, and much more.

### Use cases

What you can do

Attach documents to a work order

Associate parts to work orders

Access reference materials

### Benefits

Why it matters

Track work as it happens, even without Wi-Fi or cell reception

Get more done on-the-go

Understand job cost for better decision-making

### Features

How we enable it

QR code scanner

Parts and inventory

Attachments

Offline mode

## 6. Improve your day-to-day with configurable dashboards

Deliver intuitive, highly visual, role-based views of work directly on your homepage with simple point-and-click motions to help your technicians and staff focus on the right activity, make quicker and more informed decisions and better use their time.



Easily configure role-based homepage dashboards to enable staff to better spend their time and prioritize activity.

### Use cases

What you can do

Easily configurable role-based dashboards

Empower technicians to see what matters most

### Benefits

Why it matters

Maximum productivity

Optimal staff allocation

### Features

How we enable it

Flexible KPI dashboards

Homepage reporting

Pie charts and graphs

Mapping

## 7. Build for the future

Use Asset Essentials as a springboard into an operations management suite that unlocks the full value of data and technology to enable capital planning, smarter energy management, predictive asset lifecycle management, smarter resource and work planning, and much more.



Analyze and measure the lifecycle of an asset, including active frequency, cost trends and life expectancy

### Use cases

What you can do

Leverage the power of analytics to make data-driven decisions

Fully integrate asset-specific data into capital planning and budgeting

Identify and address problems before they occur

### Benefits

Why it matters

Improved sustainability of your capital plan

Lower maintenance cost (proactive vs. reactive)

Better visibility into your entire operations

### Features

How we enable it

Predictive Asset Lifecycle Management

Business Intelligence

Connector Tool (add-on module)