



Brightly Asset Essentials

# World class solutions for world class manufacturing

Boost efficiency while reducing downtime — Save up to 20 minutes per work order by streamlining and automating work processes



## Brightly by the numbers



**13,000+**  
clients



**4.6+ million**  
users



**400 million**  
work orders  
addressed



**49 million**  
assets logged



**\$321 billion**  
in asset value



**97%**  
client satisfaction  
rating



### Asset Management

Cost tracking and repair history for total cost of ownership decision-making



### Workflow Management

Location- and asset-based work orders, job planners, and PM calendar scheduling



### Inventory Management

Just-in-time parts inventory, as well as purchasing & requisition management



### Mobile App

Bar code and QR code capabilities for more order, asset parts management



### Robust reporting, analytics

Predefined dashboards with KPIs, reports and charts, as well as data analyzer tools



### Integrations

Connect to existing systems and automatically collect asset events and readings to generate PMs and work orders



### Implementation, training, and support

Access our legendary support team, as well as unlimited access to our learning management system

“

When we use a certain number of parts, an alert will pop up on our main dashboard and tell us the parts we need to order. It's very helpful to ensure we won't run out of any given part, which could send us down for a period of time.

**Adam Easterwood,**  
Maintenance and Facilities Team Manager at BuildASign.com

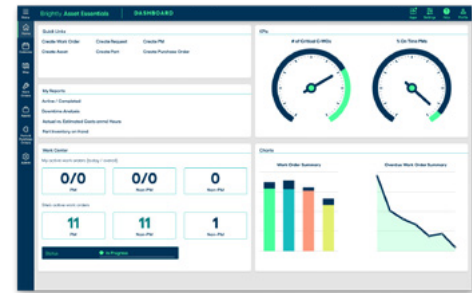
[brightlysoftware.com/assetessentials](https://brightlysoftware.com/assetessentials)

## Improve efficiencies while strategically planning for upgrades with our strategic asset management solution

Brightly's suite of powerful, cloud-based solutions work together to help you and your teams improve the efficiencies of today, while helping plan for growth of tomorrow. Wherever you are taking your first step in establishing a modern asset foundation, or you are shifting into long-term strategic planning, Brightly is there to help you one asset at a time.

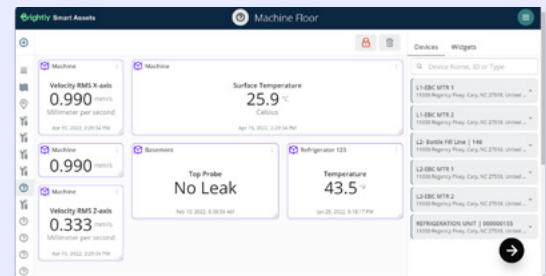
### Asset Essentials

Positioning yourself for long-term success, Asset Essentials is your asset management go-to in gaining greater operational insight into your manufacturing assets and work order management. From automating work orders to centralizing work order histories into one, easy-to-access location, AE is your first step in establishing a strong, asset management foundation, designed to improve team productivity, efficiency, and communication.



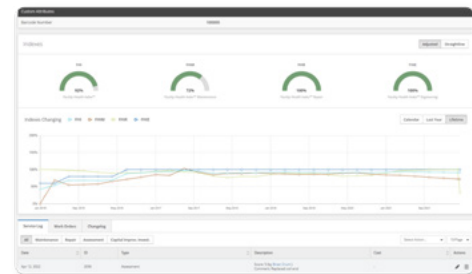
### Smart Assets

The smart partner module for Asset Essentials, Smart Assets harnesses the power of IoT to monitor and help collect asset performance data remotely and in real-time. Smart Assets reduces the need for manual inspections and data collection, as it detects anomalies before asset failure — ultimately freeing up your teams to focus on other essential tasks at-hand.



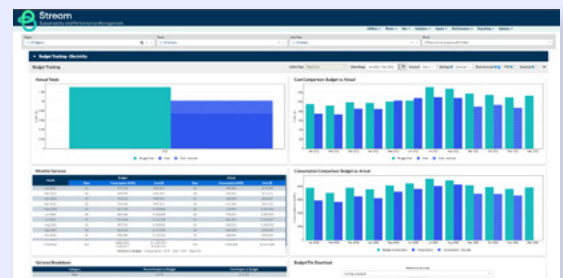
### Origin

Your all-in-one capital planning tool as you shift to strategic asset management, Origin accesses and analyzes your asset data in real-time, helping you determine where to focus your limited funds and improve your capital spending. Combining your real-time data with predictive modeling, Origin helps you confidently make & justify budget requests and capital plans to leadership, while visualizing the costs of deterring maintenance.



### Stream

Your partner in going green, Stream helps your teams uncover savings with reliable straight-from-the-source utility data, allowing you to compare energy consumption against models and benchmarks – at the plant or the full site level. Access to this real-time data enables you to make informed decisions as you track and plan against your sustainability initiatives.



## Experience the Difference

Brightly's award-winning implementation and support teams are legendary – providing our best service so you can do your best work.

Our partnership doesn't end once you and your software go live. Along with our Legendary support team, we combine expertise, trainings, libraries, and curated learnings with anytime, anywhere access to ensure you and your teams have what you need to thrive and be successful.

### Accolades

From users to industry-leading thought leaders, Brightly continues to rank as one of the top leading asset management solutions!



#### Brightly Companion

Brightly Companion is a personalized learning experience within our products and provides an interactive training journey guiding you to productivity.



#### Brightly Academy

Brightly Academy is designed to provide a self-paced learning environment for key administrators of our products. Your subscription gives you 24/7 access to curated learning content.



#### Brightly Community

Brightly Community is your central hub for our Knowledge Base, Help Site, and Brightly Academy so you can conveniently access these resources any time that is right for you.



#### Professional Services

Our Professional Services team enables clients to build a sustainable future, through trusted partnerships and industry-leading expertise.



#### Legendary Support

Our Legendary Support team is ready to answer your product questions by phone (always talk to a real person), by email (we strive to respond within the hour), and live chat!



**I can get trended information on asset health, and we've been able to detect some potential failures ahead of time that would have been catastrophic.**

**Jim Welsh,**  
Manager of Manufacturing Engineering at Tekniple

Brightly delivers the highest security standards



Data Encryption

- Encrypted at rest, in transit, and on devices
- AES 256-bit encryption protocol
- Keys protected with AWS Key Management Service (KMS)



Security Processes

- SOC 2, Type 2 (SSSAE16)
- ISO 27001 Certification
- Third-party Managed Detection and Response (MDR) service for 24/7/365 monitoring
- Require data privacy training for all employees



Software Security

- AWS security services for infrastructure, product, and procedure levels
- Role-based permissions to control data access, scoping
- Separate environments for development, QA testing, and production
- Multi-tenant data server infrastructure, client data segmented from other clients



Data Hosting

- Full data backups and recovery
- Local redundancy of systems, storage, and networks
- Real-time data monitoring
- Compliant with European Unions' Global Data Protection Regulation (GDPR)

See why Brightly is the winning solution

Brightly's Asset Essentials goes beyond centralizing asset management. Our award-winning software delivers a comprehensive data-driven solution, striking the right balance between ease of use and robust functionality.

“

It's amazing to see pictures of what's actually happening on that equipment. We can see what we're loading and in some cases, overloading. All the additional data we're gathering allows us to paint a picture or diagnose a problem. Every day, it's a learning discussion with the team.

**Glenn Munshaw,**  
Vice President of Operations, Chroma Color Corporation

Brightly Asset Essentials      Other competitors

Features	Brightly Asset Essentials	Other competitors
WO & PM Optimization	✓	
Inventory Optimization	✓	
Integration Capabilities	✓	
Mobile App	✓	
Safe & Certification Management	✓	
Unlimited Requester Access	✓	
Dedicated Account Manager	✓	
Manufacturing Experience	✓	
Multi-location asset visibility	✓	
24/7/365 In-house Support	✓	
SOC-2, Role-Based Access Control, 24/7 System monitoring	✓	
Full suite of product offerings - CapEx Budgeting/Forecasting & Energy Mgmt	✓	

About Brightly Software

Brightly, a Siemens company, enables organizations to transform the performance of their assets. Brightly is the global leader in intelligent asset management solutions. Brightly's sophisticated cloud-based platform leverages more than 20 years of data to deliver predictive insights that help users through the key phases of the entire asset lifecycle. More than 12,000 customers of every size worldwide depend on Brightly's complete suite of intuitive software—including CMMS, EAM, Strategic Asset Management, IoT Remote Monitoring, Sustainability and Community Engagement. Paired with award-winning training, support and consulting services, Brightly helps light the way to a bright future with smarter assets and sustainable communities. For more information, visit [www.brightlysoftware.com](http://www.brightlysoftware.com).