

Brightly

brightlysoftware.com

Unlock Results with Brightly's Asset Management Solutions



Giving maintenance and operational teams tools to make the honor roll

For education leaders, providing high-quality instruction for students—and keeping their parents happy—are top drivers for most decision-making. A safe and well-maintained environment is necessary to ensure the success of pupils and the satisfaction of their guardians.

Without an asset management system, operational teams are left in the precarious holding pattern of waiting for things to break, then scrambling to fix them, resulting in a never-ending backlog. Meanwhile, unessential projects get prioritized to appease well-intentioned but not fully informed parents.

With budgets—and the allocation of those funds—serving as another leading factor in decision-making, it can be challenging to surface operational concerns in any circumstance. But, for schools to remain functional, managing the assets, facilities, and the employees who take care of them, must be considered.

At Brightly, we believe that optimizing your facilities and operational resources is mission-critical to provide the learning environments necessary for today's and tomorrow's students. In this guide, we'll explore how implementing an asset management solution can help your institution harness data to better care for the schools you serve, by:

1

Increasing operational efficiency

2

Empowering data-driven decision-making

3

Assisting on a path toward sustainability



I.

Using asset management to increase operational efficiency

Pen and paper (whiteboards, post-its, and spreadsheets, either!) aren't cutting it anymore. Smarter maintenance can stretch budgets further while requiring fewer resources for operations-related tasks.

A powerful [computerized maintenance management system \(CMMS\)](#), such as Brightly's [Asset Essentials](#), enables assets to run more efficiently for longer, so you can avoid M&O costs from reactionary repairs. Automation capabilities can help teams recapture their time and schedule workflows more effectively.

Does your fieldhouse get double-booked, or are you unsure how much these extra-curricular activities are impacting your M&O budgets? Solutions, such as Brightly [Event Manager](#), can make it easier to schedule, organize, promote, and recover costs from events and facility rentals or use.

Brightly brings operational efficiency to multiple districts

No matter the location or level of education—public or private—the goal is the same: provide a high-quality experience for students. It all starts with maintaining and caring for facilities and assets. Asset Essentials simplifies this tall task by promoting optimal care for classrooms and administration buildings while easily providing maintenance teams with vital information through a mobile app so they can tackle operational tasks anywhere, anytime.



Coverage: A Brightly future for Baltimore City School District

Baltimore City School District (BCSD) wanted to track, manage and report on facilities maintenance and capital projects to better understand resources and justify funding needs for the district's 150 school buildings with 17 million square feet of facility space across 19 miles. Operating at an expansive scale with limited spare resources meant BCSD needed a solution that could streamline demands and workflows for a very busy M&O department.



Scheduling: Bishop Lynch High School says “goodbye” to double-booking

Bishop Lynch High School in Dallas, Texas hosts hundreds of events each year. Their old process for scheduling events was cumbersome and included a monthly meeting which still resulted in double bookings. Wanting something that could customize the routing and approval process, where usage requests could be submitted through an online portal, they turned to Brightly.

Overall, Bishop Lynch has been very pleased with Brightly's cloud-based Event Manager solution, which has:

- Cut down the number of man-hours needed for data entry
- Reduced the number of double bookings
- Helped improve parking when there are coinciding events



Support: Oconomowoc School District's “flawless” transition to Asset Essentials

When looking for a robust and efficient solution with an easy-to-use interface to streamline managing work orders for its team of 75, Operations Supervisor Tracy Peterson leaned on Brightly.

Ease-of-use: Pinellas County Schools streamlines operations

Pinellas County Schools, the seventh largest district in Florida, has a maintenance department with around 271 team members that care for 18 million square feet of space—and they needed an easy-to-use solution to streamline operations and establish a work order system.



Asset Essentials provides us a methodology [to] articulate problems in buildings ... a urinal doesn't work, a light bulb is out, there's a leak. With Asset Essentials, we capture the problem in a work order [and then] route it to the appropriate department and get someone working on it. With 150 buildings, there are a lot of issues. Without Brightly, we'd be in trouble.

Patrick McGough
CMMS Manager

The simplistic use of the software is something that's paramount to us. We have a lot of users in the system, [and it's] something we can't live without.

Mike Hewett
Director of Maintenance & Warehouse

Brightly's client service is top-notch. When I have a question, someone is always happy to help. Brightly makes me feel like we are their only client.

Tracy Peterson
Operations Supervisor

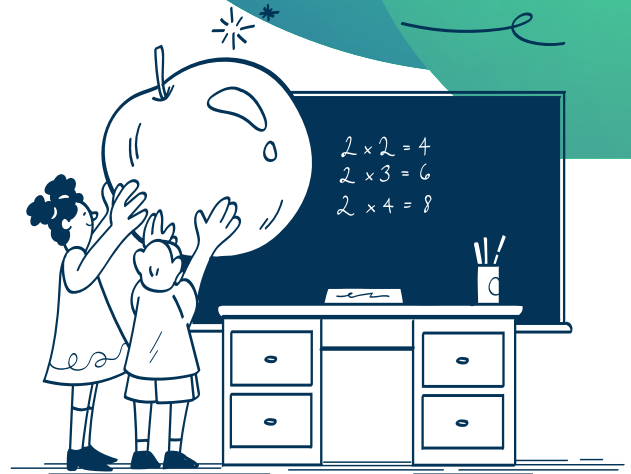
II.

Empowering data-driven decision making with asset management

When you must make the big choices about allocating funds and budgets—and support your reasoning behind your decisions—having the right data available can mean the difference between an angry community wondering why you prioritize one project over another and a fully-supported initiative.

Brightly captures usable data in all the right places

At Brightly, we live and breathe the [power of data](#) and know it's an important tool for educators and administrators. That's why our solutions use data to tell a powerful story and ensure your school can justify funding decisions you make—for the places that need it most.



Planning: Gaston County Schools choose Brightly to help with long-term capital planning

Gaston County Schools needed to convey long-term funding needs for its schools—to both the public and elected county representatives. Using Brightly solutions, an assessment documented over **3,000 deficiencies** and identified over **\$100 million** in capital improvement needs.

“

[Brightly] offered our assessment team an innovative way to document, input and manage an enormous amount of data and budget information in a format that could be easily shared and communicated on many different levels of detail.

Bill Hughes
AIA

Greenhill

SCHOOL

Visibility: Greenhill School facilities department implements work orders

Greenhill School facilities department manages 14 buildings spread across 80 acres, but lacked a controlled work order request system, resulting in an unclear understanding of the work they actually performed. Turning to Brightly, Greenhill schools were able to set up a system that revealed the department processed around 12,000 work orders in the first year of having the solution in place.



[Previously,] work order requests were submitted through an Outlook calendar... [the initial year with Brightly was] eye-opening.

Marty Haggmann

Assistant Director of Facility Service



BEAVERTON

SCHOOL DISTRICT

Allocation: Brightly helps Beaverton School District justify cost recovery efforts

As a community, Beaverton relies on the schools for many non-school events—which would be fine, but a paper system meant funds were getting misused. The district turned to Brightly to help capture data, including fee structures and scheduling, in a new system that “accurately communicate[s] that our new process protects students and taxpayers. Taxpayer dollars are for schools, and we want to keep that money in the schools, not to pay for outside event resources, wear and tear, overtime, and additional energy costs.



[Now], other departments see our facilities [usage]. Maintenance and our facility use group work together to schedule planned maintenance around events, and the centralized calendar demonstrates what resources are needed.

Kathy Gray

Facility Use Coordinator

III.

Brightly illuminates the path toward sustainability

Sustainability is no longer a buzzword, and administrators must prioritize it to align with educational goals, save costs, improve well-being, and enhance the reputation of their institutions. By leveraging data and integrating more efficient and effective operational practices, leaders can create a positive impact on the environment and the surrounding community as a whole.

We help schools achieve more sustainable futures

Brightly is driven by an undercurrent of sustainability, and our solutions, like [Energy Manager](#), provide the tools needed to identify areas of waste and improve your sustainability efforts—while delivering everyone’s favorite benefit: cost savings.



Cost savings: Brightly helps Gresham-Barlow School District save over \$1.5 Million

With an aggressive goal of moving the district from 28% to beyond 50% in cost avoidance, Terry Taylor, Director of Facilities, needed a tool that could help prove that managing energy is a win-win for everyone—especially since energy accounts for one-third of the operating budget. Using Brightly Energy Manager, Gresham-Barlow School District can track electricity, natural gas, water and solid waste, as well as recycling efforts, to the tune of nearly \$18 million saved over 14 years, earning an average ENERGY STAR score of 97.



You can’t afford to not manage your utilities. If you don’t know your energy use, then find out the energy cost. Either way, you can get the information to start moving forward. This is not hard work; it just takes a plan. The money it costs to implement will be saved so, so soon.

Terry Taylor
Director of Facilities



Real results: Des Moines Public Schools realizes \$20+ million in savings

For some schools, sustainability starts with communication. As the largest public school district in Iowa with **31,000 students, 70 facilities and 6.1 million square feet**, Des Moines Public Schools needed a system to manage the energy and utility use. More importantly, they needed a way to better understand their costs so they could more easily control and share them. Brightly's Energy Manager was just the ticket they needed to record data and help prove needs and savings.

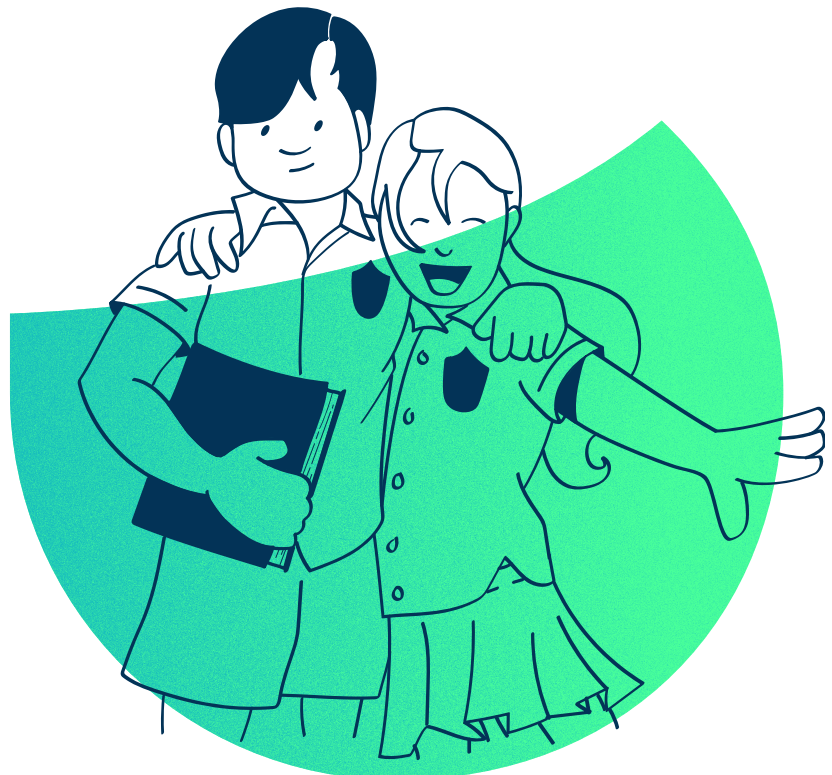
The results:

- 9-year winner of the EPA's ENERGY STAR® Partner of the Year Award
- 31% decrease in energy use intensity over 11 years
- \$20 million saved and 40K metric tons of CO2 emissions prevented since 2008
- 100% LED district



We use Energy Manager as a concise place that has all our data. Spreadsheets are difficult to manage. Having everything in one spot has proven to be a valuable thing for us. It allows us to quickly understand our utility usage and costs.

Tyler Puls
Energy & Environmental Specialist



Make A+ operational decisions with Brightly

When your budgets and choices are scrutinized, and your facilities must be maintained to foster learning and enrichment for the students they support, it can feel like an uphill battle knowing where to start.

At Brightly, we know how powerful data is for giving you the information you need to make—and communicate the reasoning behind—decisions that drive real results. Our solutions are designed to simplify some of your most pressing challenges to optimize the teams and resources that enable your schools and districts to thrive.

We also know how intimidating implementing new tools and technology can be, so we serve as a true partner—not a vendor. With Brightly, you are supported every step of the way, from rollout through training and everything in between. Our teams are available to ensure your needs are met, your questions get answered and that your institution can utilize our solutions to the best of their design.

With 20+ years of experience working with educational institutions, Brightly helps leaders like you overcome some of your toughest facilities, maintenance and operational obstacles—and even save **a little** money in the process.

Ready to learn more about Brightly in action? Check out the full story of how we helped [Baltimore School District](#) leverage data to better manage the facilities and grounds for its 75,000+ student population.

About Brightly Software

Brightly, a Siemens company, enables organizations to transform the performance of their assets. Brightly is the global leader in intelligent asset management solutions. Brightly's sophisticated cloud-based platform leverages more than 20 years of data to deliver predictive insights that help users through the key phases of the entire asset lifecycle. More than 12,000 customers of every size worldwide depend on Brightly's complete suite of intuitive software—including CMMS, EAM, Strategic Asset Management, IoT Remote Monitoring, Sustainability and Community Engagement. Paired with award-winning training, support and consulting services, Brightly helps light the way to a bright future with smarter assets and sustainable communities. For more information, visit www.brightlysoftware.com.

