



Brightly Confirm Solution Overview

All-in-one enterprise asset management solution

Managing and maintaining multiple assets in an organisation is a complex task, with many asset types being on numerous systems and requiring different levels of input and maintenance, with no centralised view of all assets. It can be difficult to get the most from your assets to meet resident expectations and regulatory compliance. These difficulties deepen with short-term, uncertain budgets and disparate asset systems that lack integration for all assets.

This all-in-one cloud-based enterprise asset management solution called Brightly Confirm is flexible, innovative, and the central hub for assets while being complimentary to your technology integrations. It streamlines information related to your public infrastructure assets, providing the real-time insight you need, whether you are in the office or out in the field, via our mobile application.



Key Benefits



Create structure and collaboration through digitalisation

Easily centralise and view all assets, allowing collaboration across asset teams to identify and effectively address priorities and risks across all asset types with access to key historical data for decision-making.



Greater operational efficiency and sustainability

Streamline day-to-day operations by monitoring, assessing, and controlling assets with preventive maintenance. Realise demand and needs across different asset types to be more sustainable and effective in deploying your resources.



Maximise your assets and optimise your budgets

Track performance, risk, and expenditures through smart real-time data to make actionable decisions. Leverage algorithms to quickly view multiple funding scenarios and maximise the longevity of assets based on your asset strategy.

Key Features



Accelerate work with operations on the move with our mobile application, even where no network connectivity exists. Automatic syncing for mobile devices.



Confirm provides GIS mapping for easy management of assets on desktops and mobile devices, with assets, enquiries, defects and locations for crews all shown on maps.



Actionable real-time data reporting allows you to optimise operations and visualise your data to determine the most effective asset maintenance strategies.



Unlike other platforms, within the asset register, you can record any information against any asset on a single, dependable platform.



Easily optimise budgets, track, and control spending on projects with allocated budgets, forecasted over time.



Confirm enables IoT connectivity across multiple asset environments.

Brightly is trusted by over **12,000** asset centric organisations



Enterprise Asset Management (EAM) in the Verdantix Green Quadrant 2022



£23b asset value under management with 50 million assets logged



31 million + jobs in our Confirm On-Demand Confirm product



99% system availability On-Demand SLA

Confirm: Features and Functionality

Workflow Management, Scheduling, and Maintenance

- Schedule, manage and maintain asset-based work orders
- Automate scheduled preventive maintenance work orders with the ability to schedule jobs, track status and costs
- View asset locations and condition assessment surveys
- Support compliance with government regulations

Fully Hosted Cloud-Based Asset Management

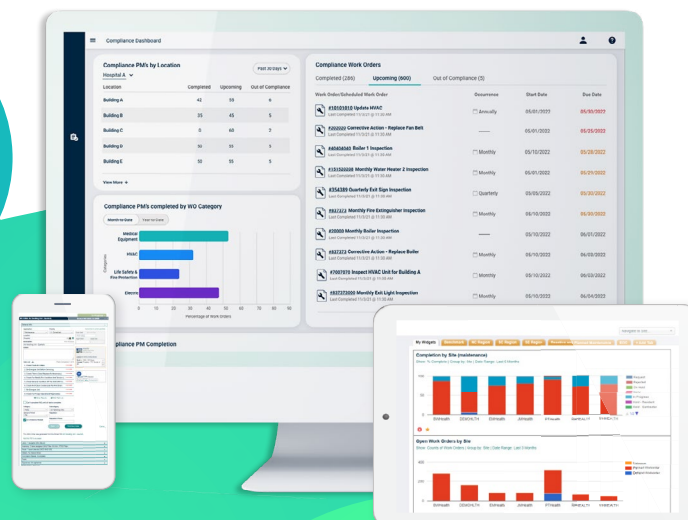
- Fully managed and hosted on Amazon Web Services (AWS)
- Industry leading APIs to enable integrations
- Latest software, free upgrades, and maintenance, gaining the latest features and functionality without the wait
- Improved system performance giving you the ability to analyse large volumes of data and uncover deeper insights with ultra processing power

Mobile Asset Management

- Asset information, data collection, inspections and customer management using mobile technology
- Automatic syncing for mobile devices and data. Work online and offline, even where no network connectivity exists
- Support for all critical workflows via mobile, receive and respond to enquires in the field
- Built with leading Geographical Information System (GIS) technology

Data Reporting and Analysis

- Customise reports, data output with dynamic BI visualisation tool
- Track budgets based on historical data and manage your KPIs and SLAs
- Pre-built reports which can easily be accessed, downloaded, and shared with predefined dashboards with KPIs
- Reports accessible via web or mobile anytime, anywhere



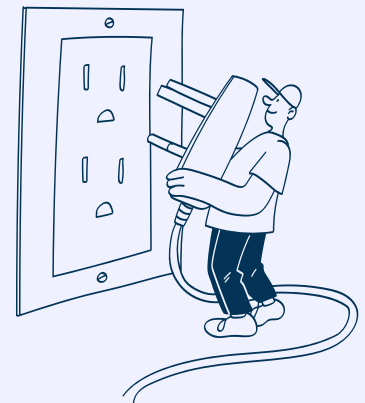
Technical Requirements

The Confirm OnDemand hosted solution is accessed over the Internet, Clients are required to provide their users with the appropriate Internet connectivity, Client installation and browser support.

Other System Integrations

Confirm includes several standard interface API technologies that fully support a range of 3rd party systems and processes, all of the integration methods are tried and tested technologies and deployed for all of our UK client base.

Common integrations: We have integrated Confirm with most commonly used third-party databases and applications using our standard interface API technologies, which are RESTful or SOAP based API's. API's include Confirm Web API, GraphQL API, CRM Connector API, Contractor Interface API, Financial Interface API, Mapping Link API (GIS).



Confirm - What We Offer

We offer a comprehensive solution to meet all public infrastructure needs, subscriptions are annual contracts, with options for multi-year pricing.

| | |
|---|---|
| Web based Enterprise Asset Management |  Services Managed Services Web-based training (Confirm Learn) |
| Flexible asset register | |
| Asset Valuation | |
| Mobile application | |
| Scheduling tool | |
| Reporting & data visualisation platform | |
| Condition monitoring (compliance) | |
| Full contract management | |
| Budget and financial management | |
| Flexible API integration | |
| IoT integration | |
| Street manager Integration | |
| UKPMS accredited | |
| Carbon Reporting | |

About Brightly Software

Brightly, a Siemens company, enables organizations to transform the performance of their assets. Brightly is the global leader in intelligent asset management solutions. Brightly's sophisticated cloud-based platform leverages more than 20 years of data to deliver predictive insights that help users through the key phases of the entire asset lifecycle. More than 12,000 customers of every size worldwide depend on Brightly's complete suite of intuitive software—including CMMS, EAM, Strategic Asset Management, IoT Remote Monitoring, Sustainability and Community Engagement. Paired with award-winning training, support and consulting services, Brightly helps light the way to a bright future with smarter assets and sustainable communities. For more information, visit www.brightlysoftware.com.