

Do More with Less: How to Maximize Asset Investments with Limited Budget

Across many industries, maintenance and facilities teams are facing similar challenges: aging equipment and infrastructure, funding constraints, and a lack of clarity of where and how to invest their limited resources.

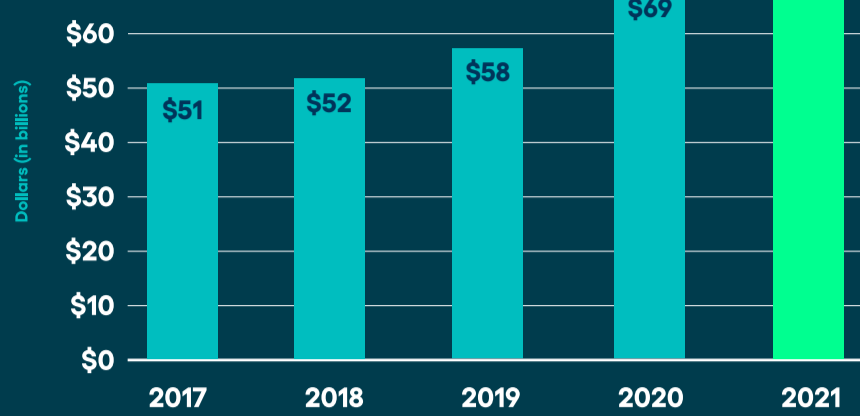


C-

America's Cumulative Infrastructure Grade as Determined by the ASCE

In Government

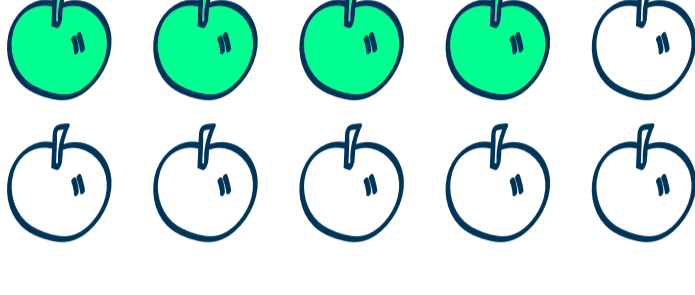
U.S. cities are facing an aging infrastructure crisis with a **current infrastructure bill of \$1.2 trillion**. And federal civilian agencies have a deferred **maintenance backlog of \$76 billion** as of FY 2021.¹



Federal Civilian Agencies' Reported Estimates of Deferred Maintenance and Repairs, Fiscal Years 2017-2021

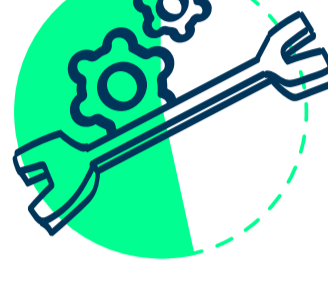
In K-12 Education

Annual expenditures for U.S. public-school districts grew from \$110 billion to \$195 billion, creating an operational and capital budget shortfall of \$85 billion.² This leaves many schools without a plan on how to address operations and maintenance needs.



4 in 10

schools **do not have** a long-term facility plan in place to address operations and maintenance



53%

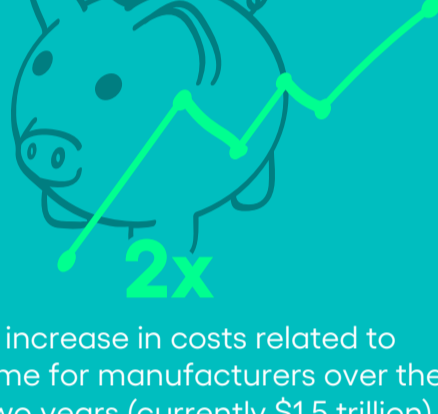
of public school districts report the **need to update or replace** multiple building systems including HVAC systems

In Higher Education

Due to budget shortfalls and increasing maintenance needs, colleges and universities are also facing a daunting maintenance backlog of \$112 billion.

36%

shortfall in capital needed to maintain U.S. higher education facilities



2x

The increase in costs related to downtime for manufacturers over the past two years (currently \$1.5 trillion)

In Manufacturing

The **average age of manufacturing equipment is reaching record heights**, leading to significant disruptions and costs associated with unexpected downtime.

In Healthcare

Historically, hospitals and other medical facilities have underinvested in infrastructure, as they have struggled to raise and justify the funds needed to keep their facilities up-to-date.



60%

The percentage of today's hospitals that have **exceeded their lifespan**



1 in 2

Nearly half of major hospital asset systems have **exceeded their useful life**



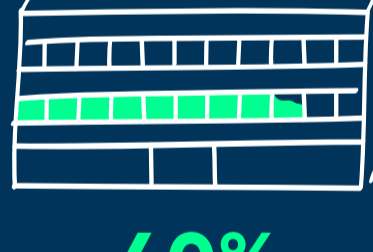
In Senior Living

Getting the most out of labor resources and budgets is an ongoing challenge for senior living communities who face rising competition, high turnover rates among staff, and a steady rise in the number of senior citizens who need their services daily.



22%

Percentage of Americans who will be over 65 by 2050⁴



40%

Annual turnover rate for assisted living workers

Finding the Right Solution

As organizations are forced to find ways to do more with less, implementing the right strategies and solutions is essential to optimizing investments, simplifying decisions, and maximizing the performance of their most critical assets and infrastructure.



70% of maintenance transformations **don't** achieve the desired value

Discover the Power of Asset Investment Planning

Asset Investment Planning (AIP) enables you to use data-driven insights to inform decision-making and drive smarter, more effective investments. With Brightly's AIP software, you can validate budgeting strategies to leadership by running multiple funding scenarios simultaneously to determine your most profitable course of action.

We've helped our client partners achieve:



63%

Average **drop in maintenance spend** over three years



89%

Average **reduction in corrective work order hours** over three years



95%

Success rate in implementing Brightly software solutions

Want to learn more about how AIP can help you do more with less?

Schedule a call with a Brightly expert today →