

5

Mistakes executives make with data

Do you know the quality of your data? Here's a quick primer on 5 mistakes executives make with analytics that can impact the health of your assets:

1 Data (mis)interpretation

Managing and improving M&O requires reporting from quality data.

75%

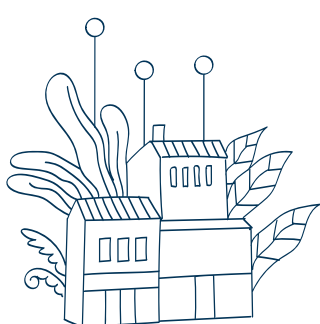
75% of executives admit to **having asset ignorance** (i.e., experiencing equipment failures due to insufficient reporting.)¹

32%

32% of executives claimed a **37% loss in production** of a critical asset.²



Smart cities will **cost \$341 billion by 2025** in part due to a reliance on battery-powered sensors.³



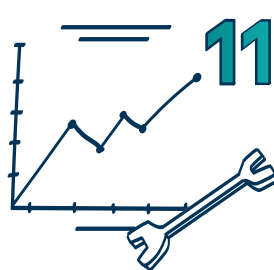
Strategically placed sensors relay data to support the whole system, rather than an abundance of sensors.

2 Not seeing the big picture

Smarter doesn't have to mean harder.

3 Thinking error-free means correct

Skipping preventive maintenance can shorten asset life.



112 billion

Deferred maintenance backlogs **cost colleges and universities \$112 billion** in 2021.⁴



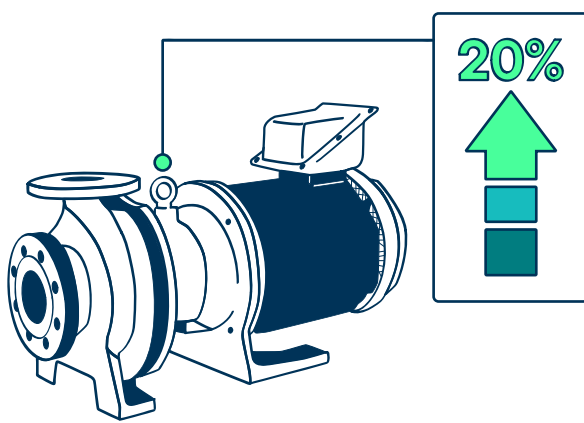
Manufacturers **lose 3.3 million operational hours** with downtime.⁵

4 Unknown error

A lack of data quality and understanding root causes leads to equipment failures.

5 Paralysis by analysis

Large amounts of unstructured data has no impact on asset health.



Analytics from well-implemented maintenance systems can **increase equipment uptime by 20%**.⁶

How to avoid those data mistakes

A robust [enterprise asset management \(EAM\) system](#) will help you optimize the maintenance of critical equipment.

Brightly's enterprise asset management tools enable you to drive productivity, efficiency and clear visibility into maintenance work:

545%

ROI with a preventive maintenance program

89%

reduction in corrective work order hours over 3 years

63%

drop in maintenance spend over 3 years

Schedule a [personalized demo](#) today.